

Handheld Laser Welding Machine



1. Product description

Fiber Laser Welding Machine is a new type high-power, high-end continuous welding tool which adopts a high-quality fiber laser source to produce a fiber optic beam. After transmission processing, the light is focused on the workpiece to achieve continuous welding. It avoids the two thresholds of thermal strain and post-treatment, and is environmentally friendly and pollution-free, greatly improving the joint strength and quality of welding.

Replacing the previously fixed light path with a hand-held type not only facilitates the welding of molds, advertising characters, kitchen utensils, doors and windows, etc., but also makes laser welding possible in outdoor operations, which indicates that the traditional welding of electric welding, argon arc welding, etc. will be replaced by laser welding.

2. Price and Payment:

Machine model	YDW-1000/YDW-1500/YDW-2000
FOB price	FOB Qingdao port
Payment: TT (30% before production, 70% before delivery) Delivery time: 10 working days Warranty: 2 year for laser source, 1 year for laser head and mechanical part. Note: When welding, use nitrogen or argon as auxiliary gas. You will need to have nitrogen or argon tanks available locally.	

3. Consumables for one year (attached):

Spare Parts	Quantity	lifetime	Pictures
Protective lens	5	One month /piece	
Copper Nozzle	5	Three months /piece	
Laser protective glass	1	Forever	
Stainless steel wire	1	5KG	

Remark: If you want to buy more extra, the accessories prices are as follows:

Protective lens: 10\$ each

Nozzle: 15\$ each

4. Max welding thickness

Power	Stainless steel	Carbon steel /Galvanized sheet	Aluminum
1000W	4mm	3mm	2mm
1500W	5mm	4mm	3mm
2000W	6mm	5mm	4mm

5. Product Parameters:

Laser type	Fiber laser
Equipment model	YDW-1000 / YDW-1500/YDW-2000
Laser power	1000W/ 1500W2000W
Laser source	Max laser source
Water chiller	HANLI industrial water chiller
Wire feeder	Include
Fiber laser optic length	10m
Laser wavelength	1080±5nm
Fiber diameter	50μm
Spot size	φ0.2-1.8mm
Output connector	QBH
Red light display	Yes
Machine voltage	Three-phase 220v
Package weight	175KG
Package size	1390*580*1210m
Standard accessories:	
5 protective lenses, 5 nozzles, a protective lens and a 5KG stainless steel wire reel.	

6. Main Parts:



Max laser source

The laser source is the core component of a machine, which provides energy for the operation of the machine.



Hand-held laser head

1. This is the SUP laser head, which can adjust the beam spot width to 5mm. Especially when welding a 90-degree outer angle, the welding range is wider and the welding effect is better.
2. It has cutting function. When using the cutting function, it needs to be replaced with a cutting nozzle and increases the air pressure.



Control panel

Used to adjust the parameters of laser output power, frequency, duty cycle, etc.



HANLI water chiller

It cools the laser source and laser head through water circulation, and automatically adjusts the temperature according to different working environments, without changing the setting parameters. If it is not turned on or the water flow is insufficient, the laser will not be generated, thus protecting the laser.



Automatic wire feeder

The wire feeding system can use 0.8mm, 1.2mm, 1.6mm, 2.0mm wire, suitable for welding gap within 2mm. If your welding gap over 0.3mm, we kindly recommend you choose add wire feeding system.



Ground Wire Clamp

The laser can only be emitted when it is clamped on the welding material, which is a safety measure of the machine.

flat angle // exterior angle // interior angle // feeding // cutting
平角 // 外角 // 内角 // 送丝 // 切割

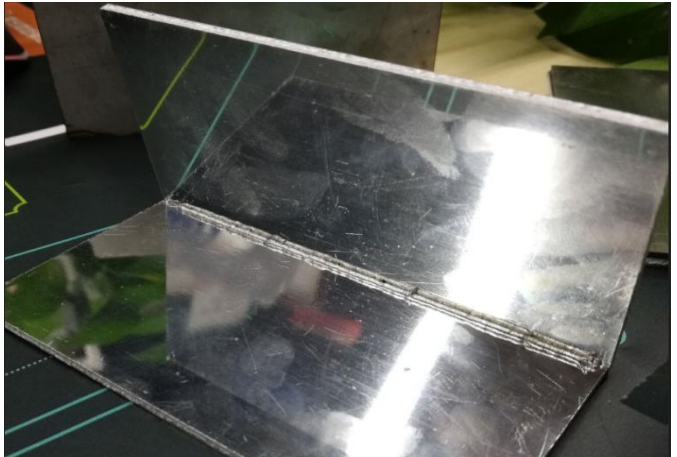


Customized nozzle

We have five kinds of nozzles: Flat fillet welding, outside fillet welding, inside fillet welding, wire feed welding, cutting nozzle.

The special shape is designed to assist unskilled workers to perform multi-angle welding.

7. Sample pictures



8. Our warranty and service:

1. Pre-sale services

Before signing a contract, our company provides customers a variety of production technology proposal, technical advice of laser equipment, sample specimens, equipment selection, and price etc. all aspect of consulting and services.

2. After-sale services

To provide customers with all aspects of service. We promise:

1. Warranty: 2 year for laser source, 1 year for laser head and mechanical part. Fiber optic cables and QBH interface are not warranted, as long as the fiber optic cable is not intentionally twisted, it can be used always.
2. Customer service will be feedback within 1 hour.
3. We provide machine lifetime maintenance services though warranty expires.
4. Offered a wide range of hardware and software support after the warranty expires, enjoy free upgrades.

9. Company Introduction:

YIDOR LASER is the manufacturer of laser machine . Our main products include Fiber Welding Machine, Fiber Marking Machine, Fiber Cutting Machine and CO2 Laser Cutting and Engraving Machine. For more details of our machine.

We treat every customer as family, and we also hope YIDOR LASER will be a trustworthy and reliable partner of you.



10. Production workshop:



Thanks for your reading!